

Flamex B se

Article Master No.: 000198

PU Suction Hose & Transport Hose, lightweight and flexible, hardly inflammable acc. to DIN 4102 B1



flame
retardant



transparen
t



flexible



light



moderatel
y pressure
resistant

Product Details

Construction / Material

- Type of construction: Profile extruded hose with metal spiral
- Spiral Design: made of steel wire
- Material of the spiral: Spring steel
- Execution of the wall: made of pure material, made of specified material, Addition of flame retardant additives, Wall thickness between the spirals approx. 0.7 mm
- Material of the wall: Polyester Polyurethane
- Specifications of the wall: Material is more abrasion resistant than comparable polyurethane according to DIN ISO 4649, flame retardant according to DIN 4102 B1

Properties

- Specifications of the product: Complies with DIN 26057, Complies with the requirements of the Holz-BG, BGI 739-2
- Chemical Properties: good UV resistance, halogen-free, good resistance to chemicals, good resistance to oil, good resistance to petrol, good ozone resistance
- Flexibility: flexible
- Weight: light
- Pressure Resistance: moderately pressure resistant

- Colour: transparent

Operating Temperature

- Temperature Range: -40 - 90
- short-term maximum temperature: peaks to 125 °C

Delivery Information

- Delivery, type of production: Various nominal widths in standard lengths are available ex-production, individual nominal widths and lengths also ex-stock

Application Areas

- Areas of application: Plant & Mechanical Engineering, Robotics & Automation, Industry, Ventilation & air-conditioning, Bulk & Construction, Wood, Chemistry, Plastics, Conveying, lifting & feeding technology, Textile, Printing & Paper, Metal & Toolmaking

Customizing Options

- optional item modification (on request): other lengths, other nominal widths, with customer-specific imprint

Article Variants

Extended Article Number	Article number	Nominal Size (DN) mm	Outer diameter mm	Bending radius* mm	Weight kg/m	Operating pressure bar	Negative pressure bar	Max. Production length m	Stock Lengths m
000198:40:x	000198	40	48	48	0.30	1.89	0.46	25.00	5, 10
000198:51:x	000198	51	58	58	0.38	1.51	0.36	25.00	5, 10, 15, 20
000198:60:x	000198	60	68	68	0.50	1.26	0.31	25.00	5, 10
000198:63:x	000198	63	71	71	0.52	1.20	0.28	25.00	5, 10
000198:65:x	000198	65	73	73	0.54	1.13	0.26	25.00	5, 10
000198:70:x	000198	70	78	78	0.58	1.01	0.26	25.00	5, 10
000198:75:x	000198	75	83	84	0.61	1.01	0.21	25.00	5, 10
000198:76:x	000198	76	85	85	0.62	0.94	0.21	25.00	/
000198:80:x	000198	80	88	88	0.65	0.88	0.21	25.00	5, 10, 15, 20
000198:90:x	000198	90	99	99	0.80	0.76	0.15	25.00	5, 10
000198:100:x	000198	100	108	110	0.94	0.76	0.15	25.00	5, 10, 15, 20
000198:102:x	000198	102	111	111	0.95	0.71	0.15	25.00	/
000198:110:x	000198	110	119	119	0.97	0.63	0.15	25.00	5, 10
000198:115:x	000198	115	124	124	0.98	0.63	0.15	25.00	/
000198:120:x	000198	120	129	129	1.00	0.63	0.15	25.00	5, 10, 15, 20
000198:125:x	000198	125	134	135	1.07	0.63	0.15	25.00	5, 10, 15, 20
000198:127:x	000198	127	137	137	1.08	0.59	0.15	25.00	/
000198:130:x	000198	130	139	139	1.14	0.50	0.15	25.00	5, 10
000198:140:x	000198	140	149	149	1.21	0.50	0.10	25.00	5, 10, 15, 20
000198:150:x	000198	150	159	161	1.27	0.50	0.10	25.00	5, 10
000198:152:x	000198	152	162	162	1.30	0.50	0.10	25.00	/
000198:160:x	000198	160	169	170	1.42	0.50	0.10	25.00	5, 10, 15, 20
000198:170:x	000198	170	179	180	1.56	0.38	0.10	25.00	/
000198:175:x	000198	175	184	185	1.63	0.38	0.10	25.00	/

Extended Article Number	Article number	Nominal Size (DN) mm	Outer diameter mm	Bending radius* mm	Weight kg/m	Operating pressure bar	Negative pressure bar	Max. Production length m	Stock Lengths m
000198:180:x	000198	180	189	190	1.70	0.38	0.10	25.00	5, 10
000198:200:x	000198	200	210	210	1.98	0.38	0.10	25.00	5, 10
000198:203:x	000198	203	213	213	2.00	0.36	0.09	25.00	/
000198:225:x	000198	225	235	235	2.18	0.25	0.05	25.00	5, 10
000198:250:x	000198	250	260	260	2.33	0.25	0.05	25.00	5, 10
000198:254:x	000198	254	264	264	2.36	0.25	0.05	25.00	/
000198:275:x	000198	275	285	284	2.47	0.25	0.05	25.00	/
000198:280:x	000198	280	290	290	2.60	0.25	0.05	25.00	/
000198:300:x	000198	300	310	310	3.20	0.23	0.05	20.00	/
000198:315:x	000198	315	325	325	3.32	0.23	0.05	20.00	/
000198:325:x	000198	325	335	335	3.40	0.23	0.05	20.00	/
000198:350:x	000198	350	360	360	3.60	0.12	0.05	20.00	/
000198:400:x	000198	400	411	410	4.45	0.12	0.05	20.00	/
000198:450:x	000198	450	461	460	5.06	0.12	0.05	20.00	/
000198:500:x	000198	500	511	510	5.70	0.12	0.04	20.00	/

All data refer to a medium and ambient temperature of +20°C.
 Specification of the bending radius related to the inside of the hose bend
 Subject to technical changes and colour deviations

Delivery Variants

Available in other lengths, other nominal diameters, with customer-specific customer-specific imprint.

Disposal instructions

After use, the product must be disposed of in accordance with the legal regulations applicable in the user's region (in Germany in accordance with the applicable Waste Catalogue Ordinance (AVV)).

Possible Connection Elements



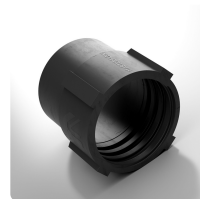
Master-Grip Hose Clamp, screwable
 Special clamp for fastening light and medium-weight, right-handed spiral hoses such as Flamex B-se, Flamex B-F se, Master-PUR Trivolution, Master-PVC and Master-SANTO



Master-Grip Hose Clamp, screwable, Steel quality W4, stainless steel 1.4301
 Special clamp for fastening light and medium-weight, right-handed spiral hoses such as Flamex B-se, Flamex B-F se, Master-PUR Trivolution, Master-PVC and Master-SANTO



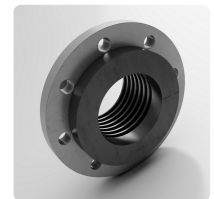
Hose connector
 Sheet steel connector for extending, connecting and joining light to medium-weight hoses



PU Screw Cuff EL
 PU end fitting for Master-PUR L/H and Master-PVC L/H hoses, electrically conductive



Combiflex PU Threaded Sockets
 PU threaded connector for all Master-PUR L, Master-PUR H and Master-PUR HX hose types, based on DIN ISO 228



Combiflex PU Swivel Flange
 screw-on plastic collar with loose flange for Master-PUR L, Master-PUR H, Master-PUR HX and Master-PUR Performance, for counterflanges acc. to DIN 2632 / DIN 2633 / DIN 2673

Individual consultation

We offer consultation by
phone:
+49 209 97077-112

Product requests via
[masterflex.de/en](https://www.masterflex.de/en)

Address Headquarters

Masterflex SE
Willy-Brandt-Allee 300
45981 Gelsenkirchen

