

Master-PUR Inline

Article Master No.: 000195

PU Suction hose & Transport Hose, extremely abrasion resistant, vacuum proof, seamless, very smooth inner lining, antistatic, microbe-resistant



antistatic



microbe resistant



hydrolysis resistant



moderately flexible



heavy



very pressure resistant

Product Details

Construction / Material

- Type of construction: Profile extruded hose with metal spiral
- Spiral Design: made of steel wire
- Material of the spiral: Spring steel
- Execution of the wall: made of pure material, made of specified material, Addition of a non-migrating permanent antistatic agent, Wall thickness between the spirals approx. 5.5 mm
- Specifications of the wall: Surface resistance $R_0 < 10^9$ Ohm, measured according to DIN EN ISO 8031
- Material of the inner layer: Polyether Polyurethane
- Specifications of the inner layer: extremely abrasion-resistant, super-strong inliner made of polyurethane 60° Shore A
- Material of the outer layer: Polyester Polyurethane

Properties

- Specifications of the product: according to TRGS 727 and ATEX 2014/34 EU
- Chemical Properties: microbe-resistant, halogen-free, good resistance to chemicals, good UV resistance, good resistance to oil, good resistance to petrol, good ozone resistance, plasticiser-free
- Flexibility: moderately flexible
- Physical Properties: permanently antistatic

- **Weight:** heavy
- **Pressure Resistance:** very pressure resistant
- **Colour:** Colour of the interior wall
- **Other:** high vacuum and good pressure resistance, particularly smooth on the inside, Configurable as a hose system with digital interface for compatibility with the AMPIUS® app

Operating Temperature

- **Temperature Range:** -40 - 90
- **short-term maximum temperature:** peaks to 125 °C

Delivery Information

- **Delivery, type of production:** Various nominal widths in standard lengths are available ex-production, individual nominal widths and lengths also ex-stock

Application Areas

- **Areas of application:** Industry, Bulk & Construction, Chemistry, Food & Pharma, Waste disposal & cleaning technology, Plastics, Textile, Metal & Toolmaking

Customizing Options

- **optional item modification (on request):** other colours, other lengths, other nominal widths, with customer-specific imprint

Article Variants

Extended Article Number	Article number	Nominal Size (DN) mm	Outer diameter mm	Bending radius* mm	Weight kg/m	Operating pressure bar	Negative pressure bar	Max. Production length m	Stock Lengths m
000195:38:x	000195	38	56	150	1.72	4.65	0.94	20.00	
000195:40:x	000195	40	58	160	1.79	4.50	0.94	20.00	
000195:51:x	000195	51	70	200	1.64	4.13	0.94	20.00	2.50, 5, 7.50, 10, 20
000195:65:x	000195	65	85	300	2.02	3.90	0.94	20.00	2.50, 5, 7.50, 10, 15, 20
000195:76:x	000195	76	97	400	3.44	3.75	0.94	20.00	2.50, 5, 7.50, 10, 15, 20
000195:80:x	000195	80	99	410	2.69	3.38	0.94	20.00	2.50, 5, 7.50, 10, 15, 20
000195:102:x	000195	102	122	430	4.39	3.00	0.94	20.00	2.50, 5, 7.50, 10, 15, 20
000195:115:x	000195	115	136	440	4.90	2.60	0.94	15.00	
000195:127:x	000195	127	148	450	5.69	2.40	0.94	15.00	2.50, 5, 7.50, 10, 15
000195:152:x	000195	152	175	600	7.30	1.95	0.94	15.00	
000195:175:x	000195	175	198	700	7.48	1.80	0.77	10.00	
000195:180:x	000195	180	202	700	7.68	1.65	0.75	10.00	
000195:200:x	000195	200	223	800	10.01	1.35	0.67	10.00	2.50, 5, 7.50, 10
000195:203:x	000195	203	227	800	10.20	1.35	0.67	10.00	
000195:250:x	000195	250	271	1000	12.07	0.95	0.50	10.00	

All data refer to a medium and ambient temperature of +20°C.

Specification of the bending radius related to the inside of the hose bend

Subject to technical changes and colour deviations

Delivery Variants

Available in other lengths, other nominal diameters, with customer-specific customer-specific imprint.

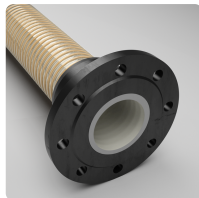
Possible Connection Elements



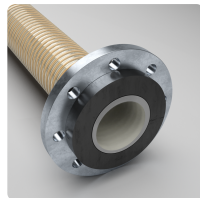
Hose Clamp with Bolts
special clamp for fastening medium and heavy spiral hoses to connection pipes on mobile and stationary units



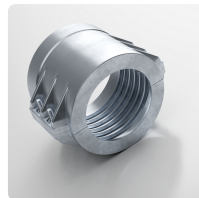
Hose Clamp with Bolts, Steel quality W4, stainless steel 1.4301
Special clamp for fastening medium and heavy spiral hoses to connection pipes on mobile and stationary units



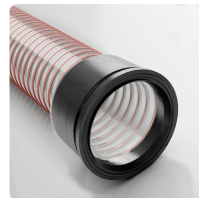
Combiflex Cast-on PU Fixed Flange
Fixed PU flange for all Master-PUR hoses, for counterflanges to DIN 2632 / DIN 2633 / DIN 2673



Combiflex Cast-on PU Swivel Flange
Fixed cast-on PU loose flange for all Master-PUR hoses, for counterflanges to DIN 2632 / DIN 2633 / DIN 2673



Clamp Collars, screwed
Clamp collars according to DIN EN 14420-3



Combiflex PU Cone Flange permanently installed
fixed quick connector system for all Master-PUR L, Master-PUR H and Master-PUR HX hoses, following DIN 3016

Individual consultation

We offer consultation by phone:
+49 209 97077-112

Product requests via masterflex.de/en

Address Headquarters

Masterflex SE
Willy-Brandt-Allee 300
45981 Gelsenkirchen

