

Master-PUR L Bio Based

Article Master No.: 008258

PU suction hose / transport hose made of bio-based polyether polyurethane, lightweight, very good flexibility, hydrolysis and microbe resistant.



transparent



microbe resistant



hydrolysis resistant



moderately flexible



light



moderately pressure resistant

Product Details

Construction / Material

- **Spiral Design:** made of steel wire
- **Material of the spiral:** Spring steel
- **Execution of the wall:** made of specified material, Wall thickness between the spirals approx. 0.7 mm
- **Material of the wall:** Polyether Polyurethane from predominantly bio-based plastics (partly from biomass)

Properties

- **Chemical Properties:** good resistance to petrol, very good resistance to chemicals, good resistance to oil, good UV resistance, good ozone resistance, halogen-free, hydrolysis resistant, microbe-resistant
- **Flexibility:** moderately flexible
- **Weight:** light
- **Pressure Resistance:** moderately pressure resistant
- **Colour:** transparent

Operating Temperature

- **Temperature Range:** -40 - 90
- **short-term maximum temperature:** peaks to 125 °C

Delivery Information

Application Areas

- Areas of application: Plant & Mechanical Engineering

Customizing Options

- optional item modification (on request): other colours, other nominal widths, flame retardant

Article Variants

Extended Article Number	Article number	Nominal Size (DN) mm	Outer diameter mm	Bending radius* mm	Weight kg/m	Operating pressure bar	Negative pressure bar	Max. Production length m	Stock Lengths m
008258:40:x	008258	40	48	48	0.30	1.89	0.46	25.00	/
008258:50:x	008258	50	57	58	0.37	1.59	0.39	25.00	/
008258:51:x	008258	51	58	58	0.38	1.51	0.36	25.00	/
008258:60:x	008258	60	68	68	0.50	1.26	0.31	25.00	/
008258:63:x	008258	63	71	71	0.52	1.20	0.28	25.00	/
008258:65:x	008258	65	73	73	0.54	1.13	0.26	25.00	/
008258:70:x	008258	70	78	78	0.58	1.01	0.26	25.00	/
008258:75:x	008258	75	83	84	0.61	1.01	0.21	25.00	/
008258:76:x	008258	76	85	85	0.62	0.94	0.21	25.00	/
008258:80:x	008258	80	88	88	0.65	0.88	0.21	25.00	/
008258:90:x	008258	90	99	99	0.80	0.76	0.15	25.00	/
008258:100:x	008258	100	108	110	0.94	0.76	0.15	25.00	/
008258:102:x	008258	102	111	111	0.95	0.71	0.15	25.00	/
008258:110:x	008258	110	119	119	0.97	0.63	0.15	25.00	/
008258:115:x	008258	115	124	124	0.98	0.63	0.15	25.00	/
008258:120:x	008258	120	129	129	1.00	0.63	0.15	25.00	/
008258:125:x	008258	125	134	135	1.07	0.63	0.15	25.00	/
008258:127:x	008258	127	137	137	1.08	0.59	0.15	25.00	/
008258:130:x	008258	130	139	139	1.14	0.50	0.15	25.00	/
008258:140:x	008258	140	149	149	1.21	0.50	0.10	25.00	/
008258:150:x	008258	150	159	161	1.27	0.50	0.10	25.00	/
008258:152:x	008258	152	162	162	1.30	0.50	0.10	25.00	/
008258:160:x	008258	160	169	170	1.42	0.50	0.10	25.00	/
008258:170:x	008258	170	179	180	1.56	0.38	0.10	25.00	/
008258:175:x	008258	175	184	185	1.63	0.38	0.10	25.00	/
008258:180:x	008258	180	189	190	1.70	0.38	0.10	25.00	/
008258:200:x	008258	200	210	210	1.98	0.38	0.10	25.00	/
008258:203:x	008258	203	213	213	2.00	0.36	0.09	25.00	/
008258:225:x	008258	225	235	235	2.18	0.25	0.05	25.00	/
008258:250:x	008258	250	260	260	2.33	0.25	0.05	25.00	/
008258:254:x	008258	254	264	264	2.36	0.25	0.05	25.00	/
008258:275:x	008258	275	285	284	2.47	0.25	0.05	25.00	/
008258:280:x	008258	280	290	290	2.60	0.25	0.05	25.00	/
008258:300:x	008258	300	310	310	3.20	0.23	0.05	20.00	/
008258:315:x	008258	315	325	325	3.32	0.23	0.05	20.00	/

Extended Article Number	Article number	Nominal Size (DN) mm	Outer diameter mm	Bending radius* mm	Weight kg/m	Operating pressure bar	Negative pressure bar	Max. Production length m	Stock Lengths m
008258:325:x	008258	325	335	335	3.40	0.23	0.05	20.00	/
008258:350:x	008258	350	360	360	3.60	0.12	0.05	20.00	/
008258:400:x	008258	400	411	410	4.45	0.12	0.05	20.00	/
008258:450:x	008258	450	461	460	5.06	0.12	0.05	20.00	/
008258:500:x	008258	500	511	510	5.70	0.12	0.04	20.00	/

All data refer to a medium and ambient temperature of +20°C.
Specification of the bending radius related to the inside of the hose bend.
Subject to technical changes and colour deviations.

Delivery Variants

Available in other lengths, other nominal diameters, with customer-specific customer-specific imprint.

Possible Connection Elements



Master-Grip Hose Clamp, screwable
Special clamp for fastening light and medium-weight, right-handed spiral hoses such as Flamex B-se, Flamex B-F se, Master-PUR Trivolution, Master-PVC and Master-SANTO



Master-Grip Hose Clamp, screwable, Steel quality W4, stainless steel 1.4301
Special clamp for fastening light and medium-weight, right-handed spiral hoses such as Flamex B-se, Flamex B-F se, Master-PUR Trivolution, Master-PVC and Master-SANTO



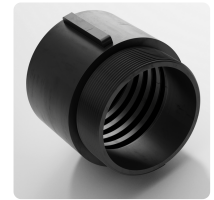
Master-Grip Quick-Fix Clamp
Special clamp for fastening light and medium-weight, right-hand spiral hoses such as Flamex B-se, Flamex B-F se, Master-PUR Trivolution, Master-PVC and Master-SANTO



Hose connector
Sheet steel connector for extending, connecting and joining light to medium-weight hoses



PU Screw Cuff EL
PU end fitting for Master-PUR L/H and Master-PVC L/H hoses, electrically conductive



Combiflex PU Threaded Sockets
PU threaded connector for all Master-PUR L, Master-PUR H and Master-PUR HX hose types, based on DIN ISO 228

Individual consultation

We offer consultation by phone:
+49 209 97077-112

Product requests via
masterflex.de/en

Address Headquarters

Masterflex SE
Willy-Brandt-Allee 300
45981 Gelsenkirchen

